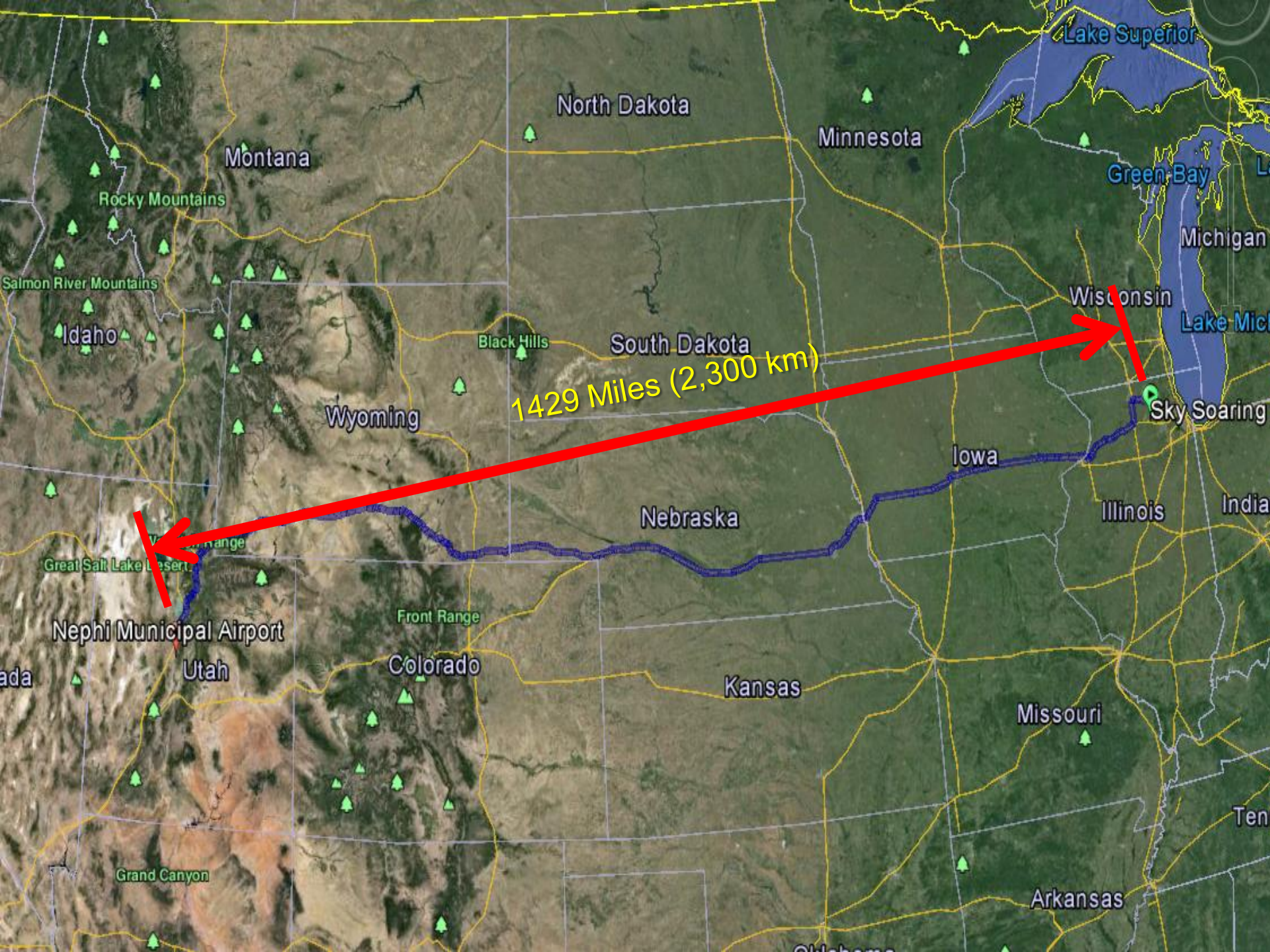


Online Contest (OLC) & Cross Country Camp

Greg Palmer & John DeRosa
Nephi, Utah

August 5th-11th, 2013



Lake Superior

North Dakota

Minnesota

Montana

Green Bay

Michigan

Wisconsin

Lake Michigan

South Dakota

Black Hills

Wyoming

1429 Miles (2,300 km)

Iowa

Illinois

Indiana

Nebraska

Great Salt Lake Desert

Front Range

Colorado

Kansas

Missouri

Arkansas

Nephi Municipal Airport

Utah

Grand Canyon

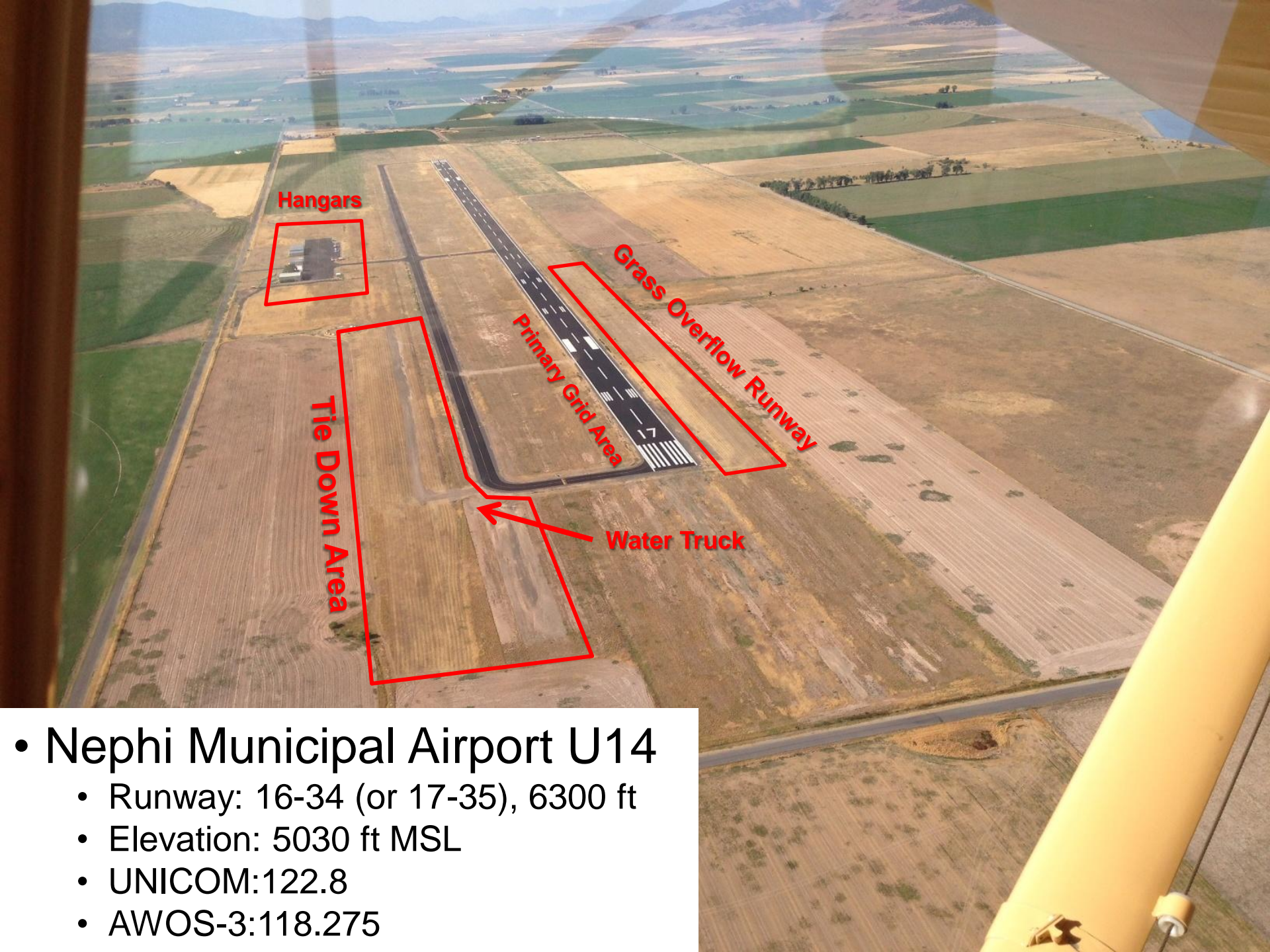
- Departed Friday Noon
- Arrived Sunday 3PM
- **Mon-Tue Practice Days**
- **Wed-Sun Official Camp Days**
- Departed Monday 8AM
- Arrived Tuesday 10PM





Big Mountain Campground





Hangars

Grass Overflow Runway

Primary Grid Area

Tie Down Area

Water Truck

• Nephi Municipal Airport U14

- Runway: 16-34 (or 17-35), 6300 ft
- Elevation: 5030 ft MSL
- UNICOM:122.8
- AWOS-3:118.275



• Nephi Municipal Airport U14

- Runway: 16-34 (or 17-35), 6300 ft
- Elevation: 5030 ft MSL
- UNICOM:122.8
- AWOS-3:118.275

Tie Downs

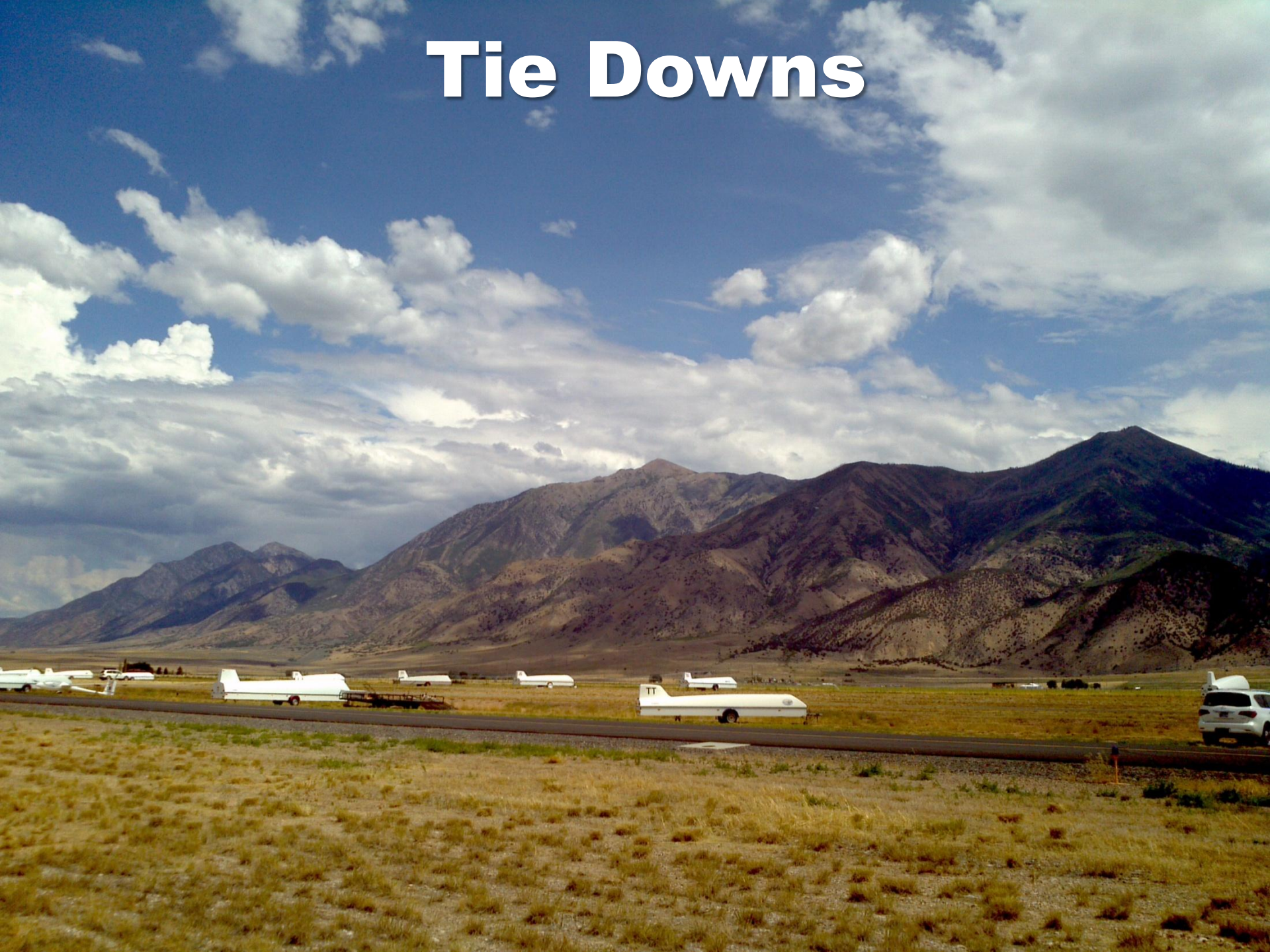
Mount Nebo
2nd highest peak in Utah



Tie Downs



Tie Downs



Calendar of Events

Nephi OLC/XC Camp Calendar of Events

August 5-11, 2013

[illegible]

Pilot Daily Morning Meetings





The Host

Bruno Vassel

“B4”



Contest Director

Tim Taylor
"TT"

Weather

Lynn Alley "2KA"

Retrieve Desk & Line Ramrod

Beth Ann and
Paul Schneider
"GS"



Awards and Gifts





Morning Bragging Rights

John Weber
Arcus M
"MM1"



Dan Wrobel
Ventus 17.6M
"DW"



More Bragging

PowerFlarm

- FLARM was required at the event. Getting more common.
- \$50 rental with free postage both ways. Painless!
- PowerFlarm Portable is the rental unit
- Could use internal batteries but ship's power better option
- The PowerFlarm Portable did not have great coverage ~1 mile
- The PowerFlarm Brick had much better coverage reportedly out to 4-5 miles.
- Could see the other glider's contest IDs



WILLIAMS SOARING CENTER

<http://www.williamssoaring.com/powerflarm/rent.html>



Other Details

- Nephi Municipal Airport U14
- Salt Lake City and Las Vegas Sectionals needed
- SSA sanctioned event (for insurance purposes)
- Water Truck on site
- Oxygen refills on site (\$)



- Meals
 - Pancake Breakfast – Fund Raisers – Lions Club
 - Lunch each day – Fund Raiser – Local high school
 - Dinners – Wed through Saturday Fund Raiser

• **Nephi City Support!!**

Gridding



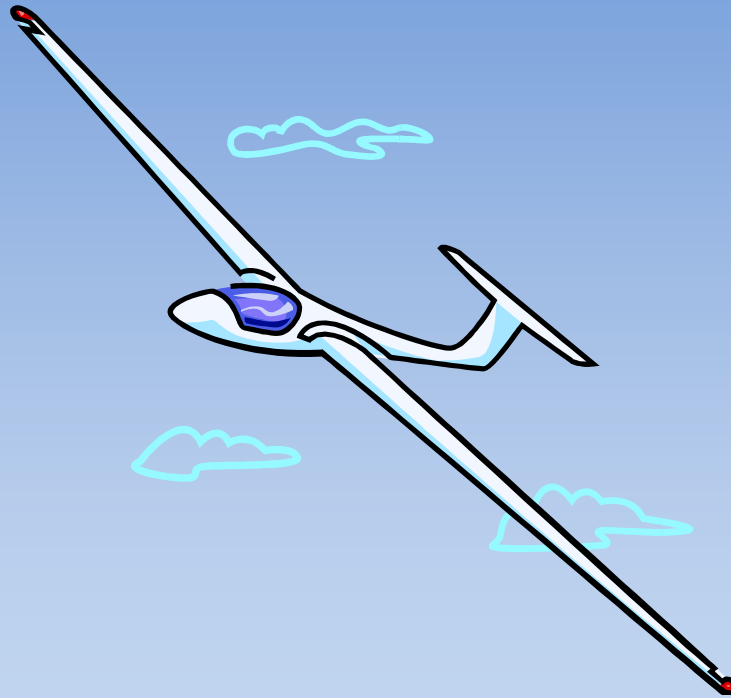
Practice Day Gridding



Arcus motorglider behind a glider on tow



Airspace and Terrain



Cache Valley Soaring Association

Logan

Elk Mountain Soaring

Ogden

Wasatch Range

Utah Soaring Association

Great Salt Lake

Salt Lake City

Provo

Nephi Municipal Airport

Parowan 180 Miles



© 2013 Google
© 2013 Europa Technologies
Image Landsat



A detailed topographic map of Cache Valley, Utah, featuring a grid system. The map shows various geographical features, including the Snake River and surrounding mountains. A large white rectangular box highlights a central area. Within this box, a red hatched region indicates a specific area of interest. Three red stars mark key locations: one in the upper right, one near the center-right, and one at the bottom center. The bottom center star is enclosed in a red square, which also contains a red airplane icon. Text labels are placed next to the stars. The map includes numerous contour lines, elevation markers, and labels for various land areas and features.

★ Cache Valley Soaring Associ

★ Elk Mountain Soaring

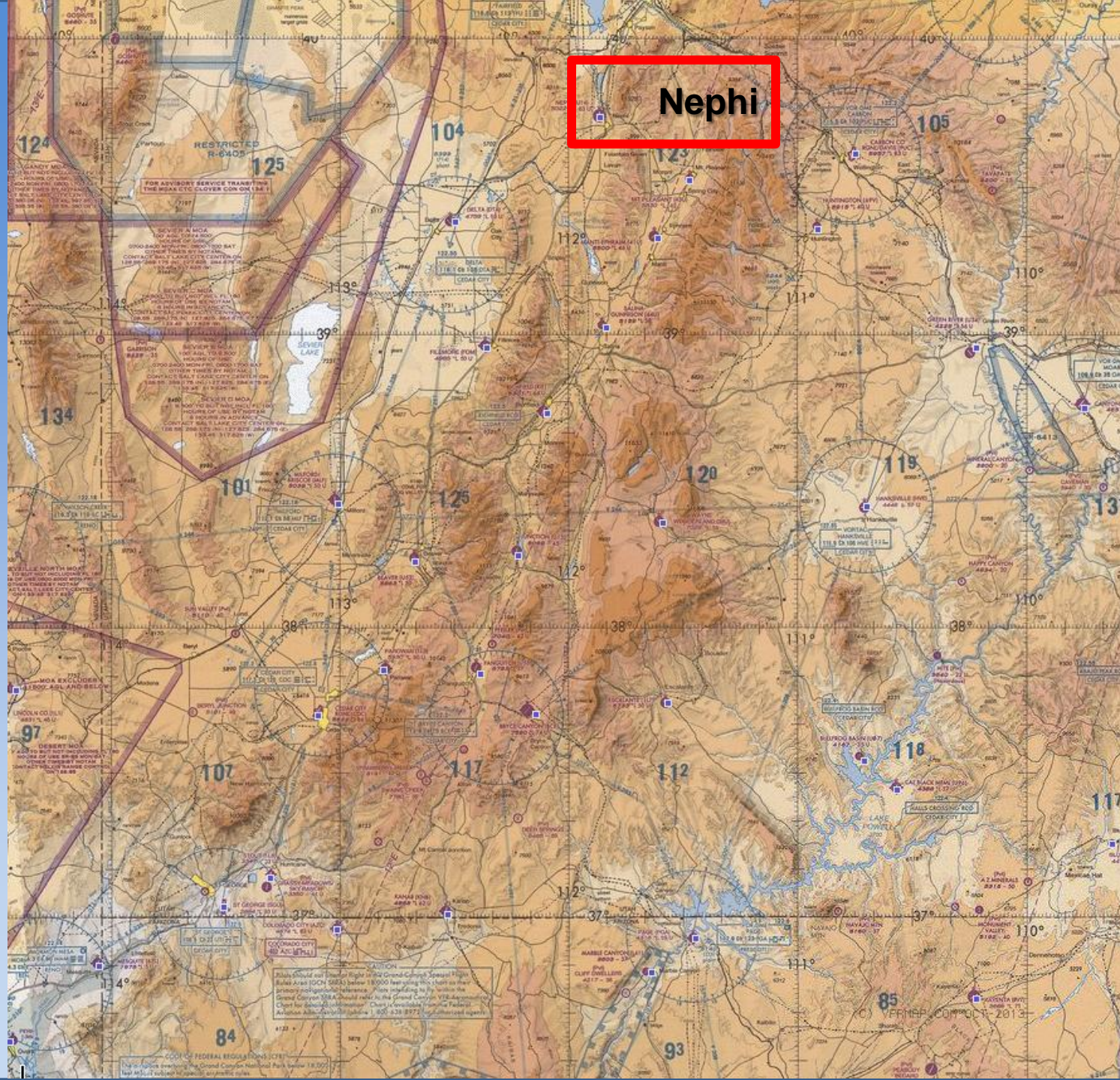
★ Utah Soaring A

Nephi

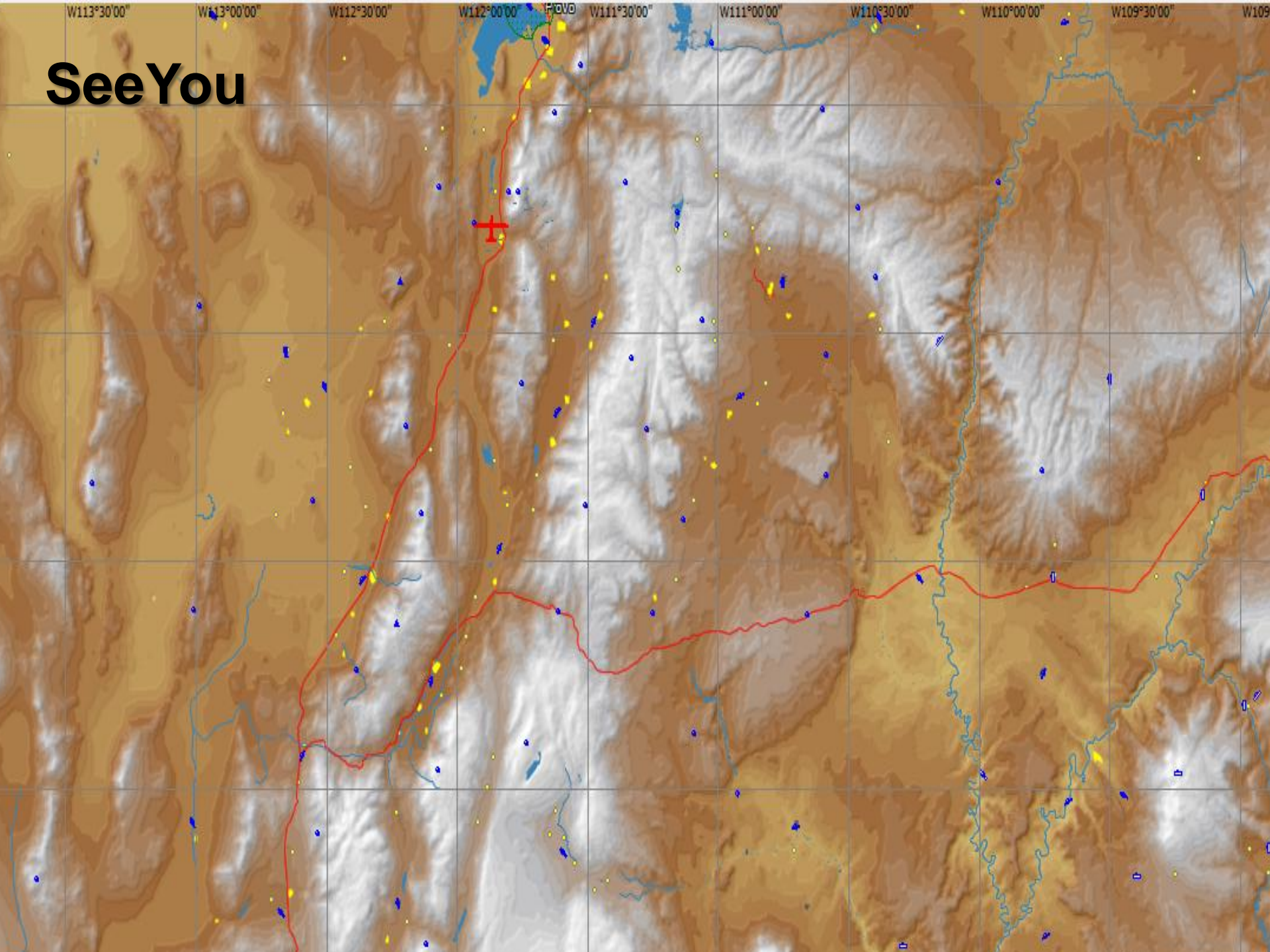


Nephi

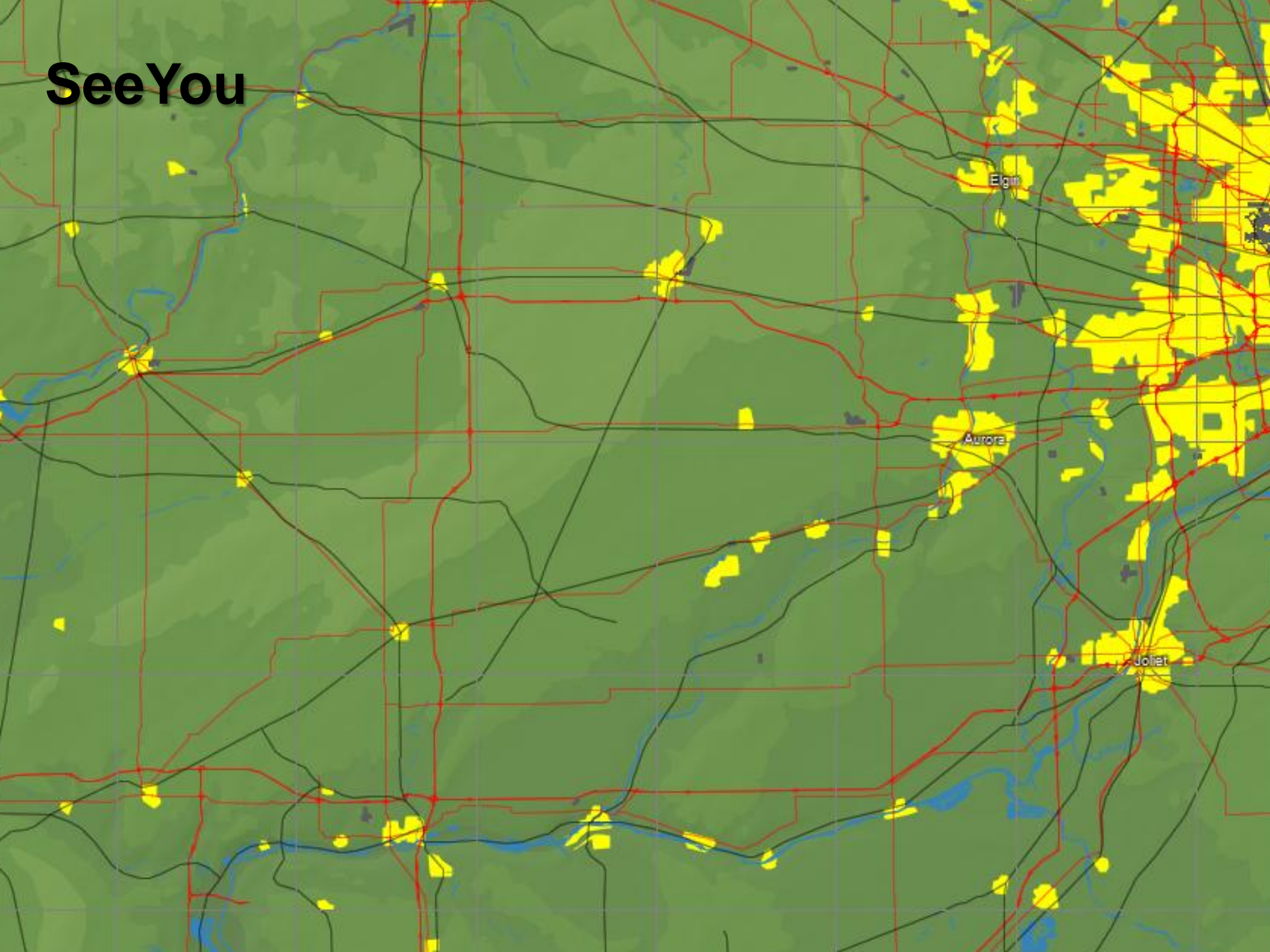
Nephi

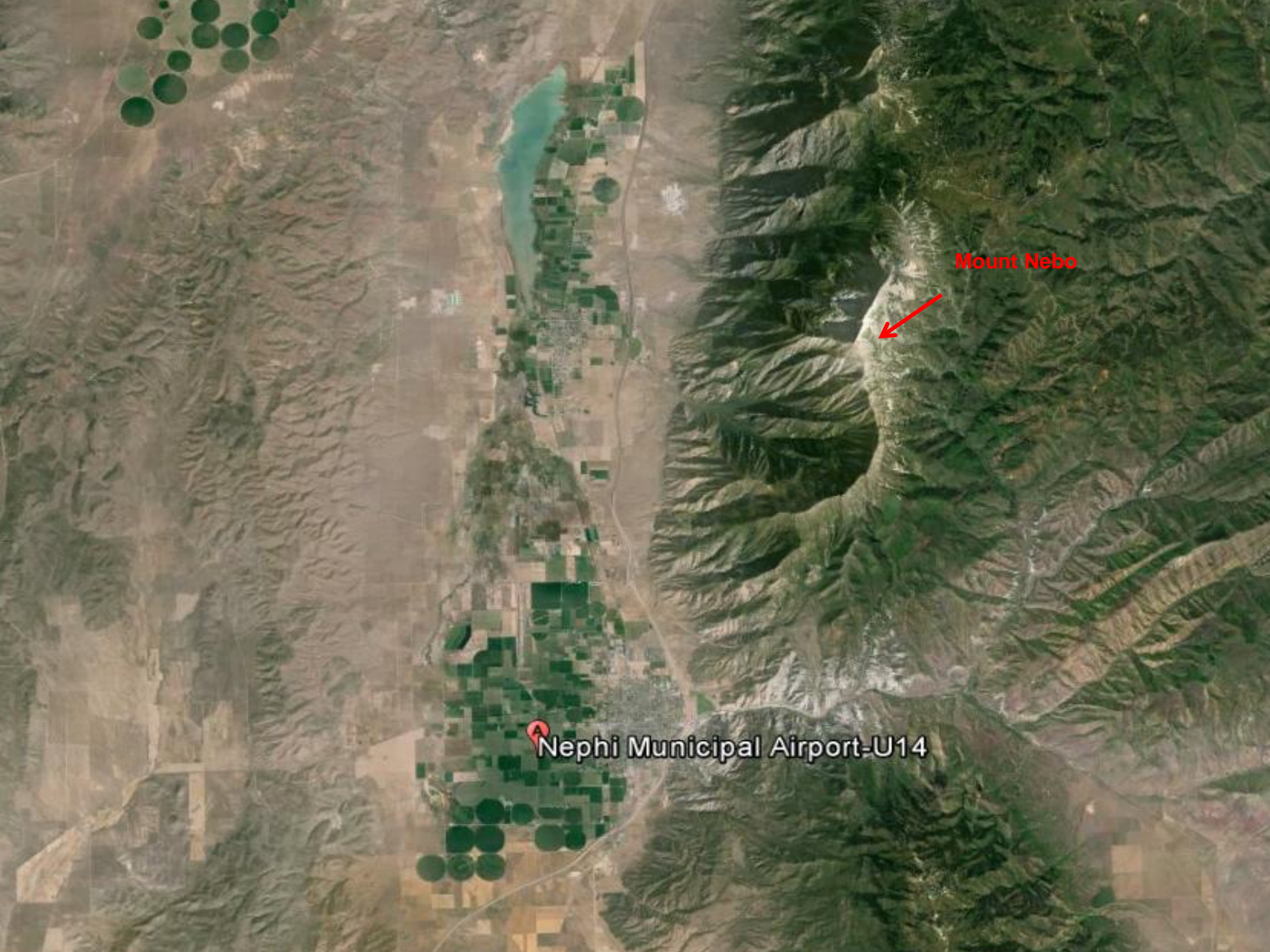


See You




See You





Mount Nebo

Nephi Municipal Airport-U14



Nephi Municipal Airport-U14

This is a satellite map view of a mountainous region. A red pin is placed on a ridge, marking the location of the Nephi Municipal Airport. The terrain is rugged, with green forested slopes and brownish, rocky or sparsely vegetated peaks. A small turquoise lake is visible at the top of the image. The map includes a north arrow in the top right corner and a scale bar below it.

Image Landsat

Google earth



Kimo's





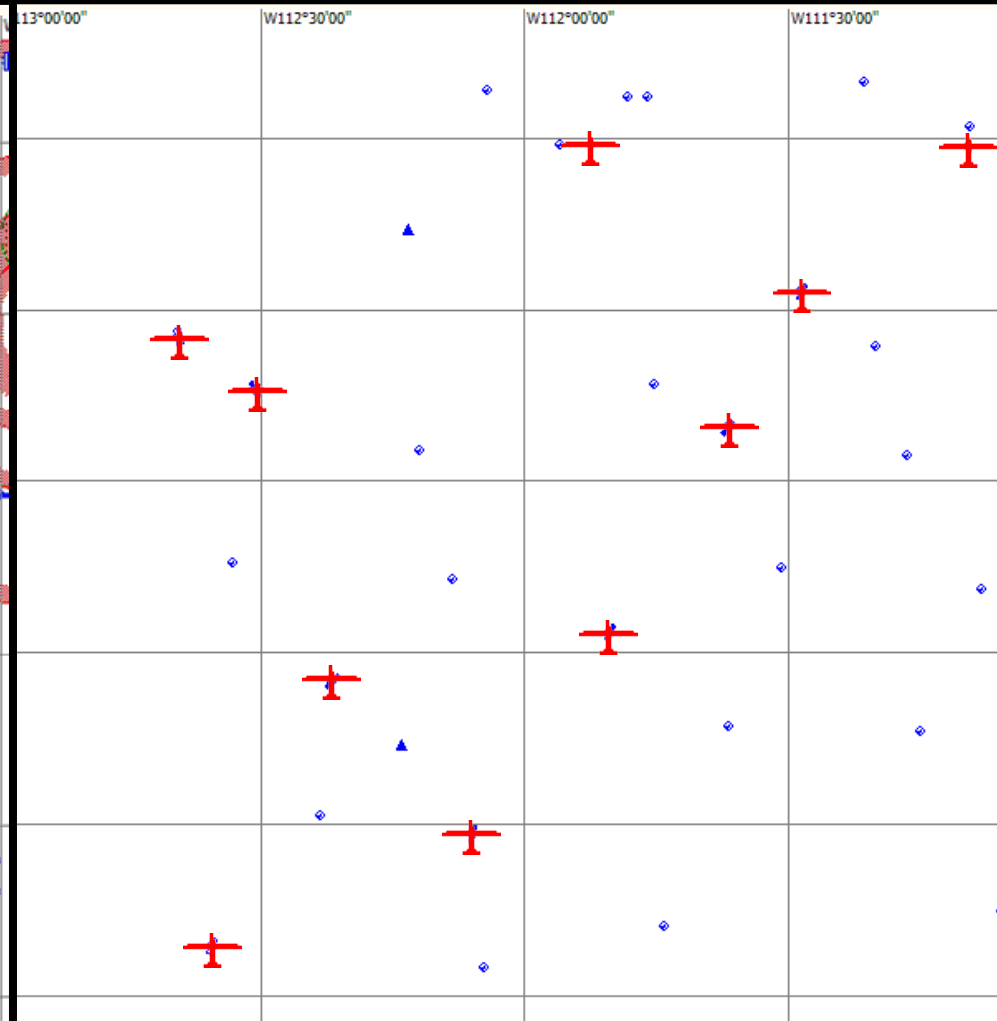
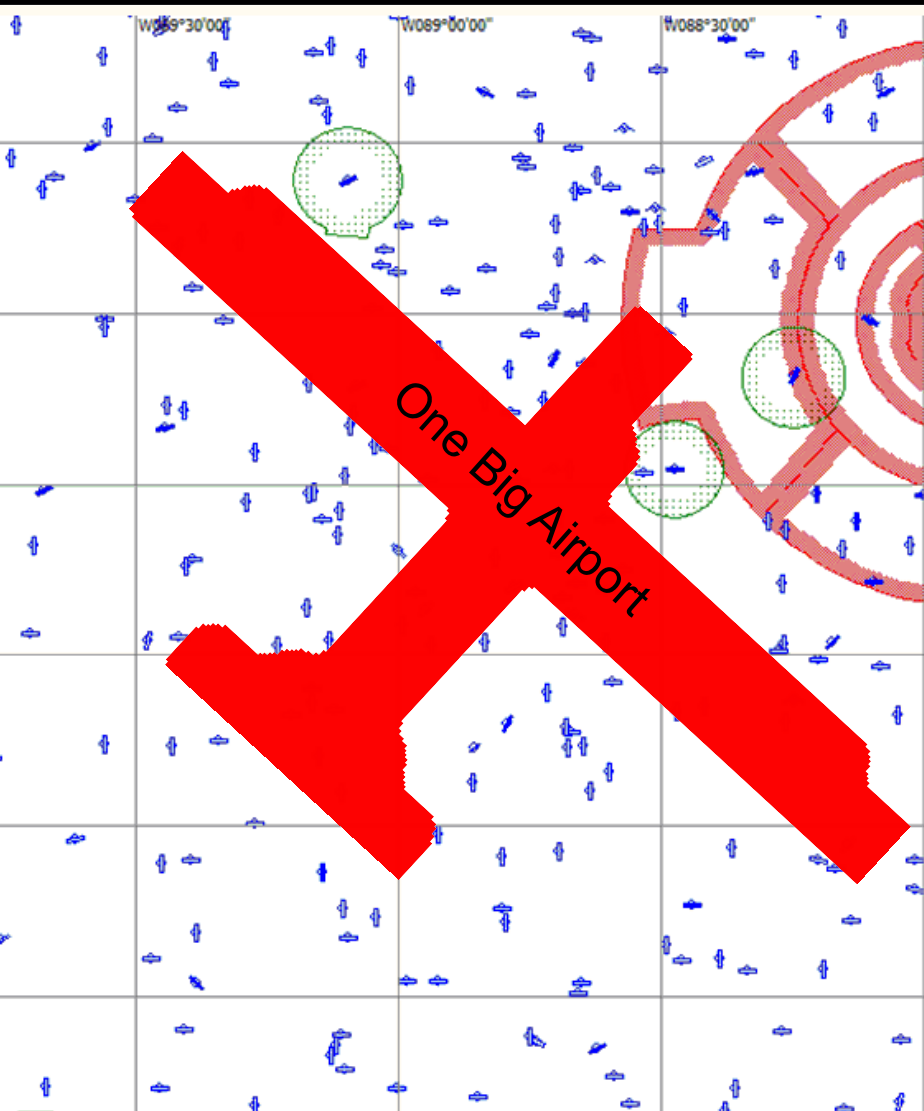


Turnpoints vs. Airports

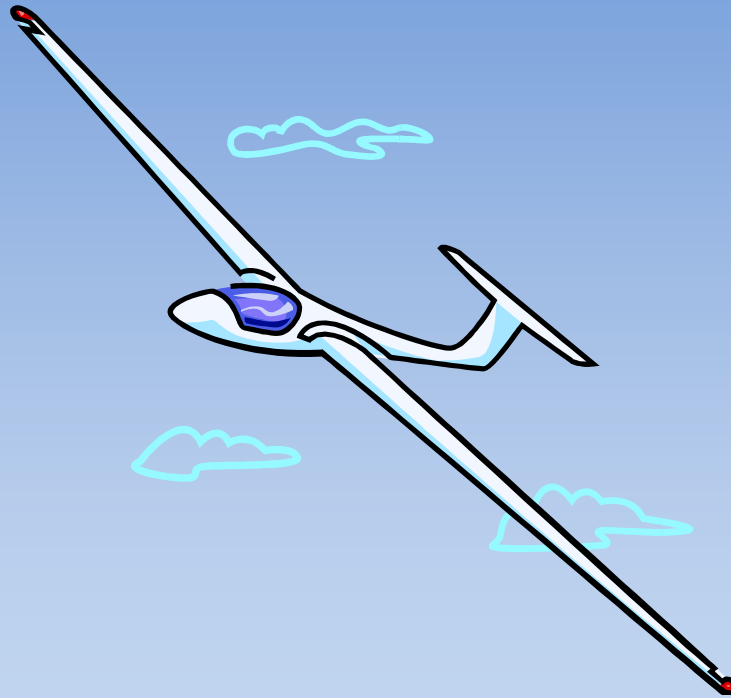
SeeYou - Same Scale

Chicago

Utah



Weather







Forest Fire - CausedTFR

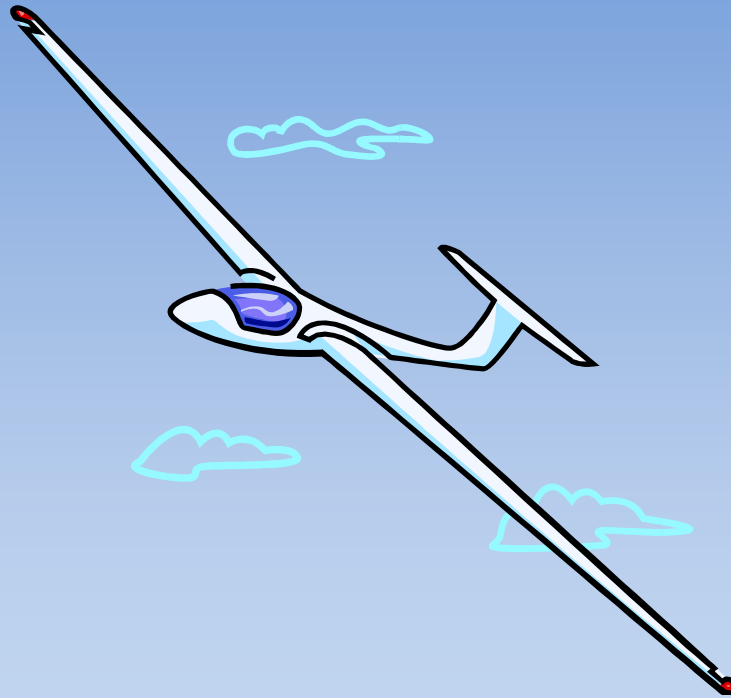








Tasks and Flights



Daily Task Sheets (Wed-Sun)

Task Sheet

SSA

Date: August 9, 2013

Location: Nephi, Utah

XC Camp Day 3

Task

Start Height Maximum	11,000 feet msl
Finish Height Minimum	5,500 feet msl

01. East Start	5	sm radius
38 Kanosh Canyon	10	sm radius
47 Mt Baldy	30	sm radius
64 Pole mountain	30	sm radius
Finish	1	sm radius

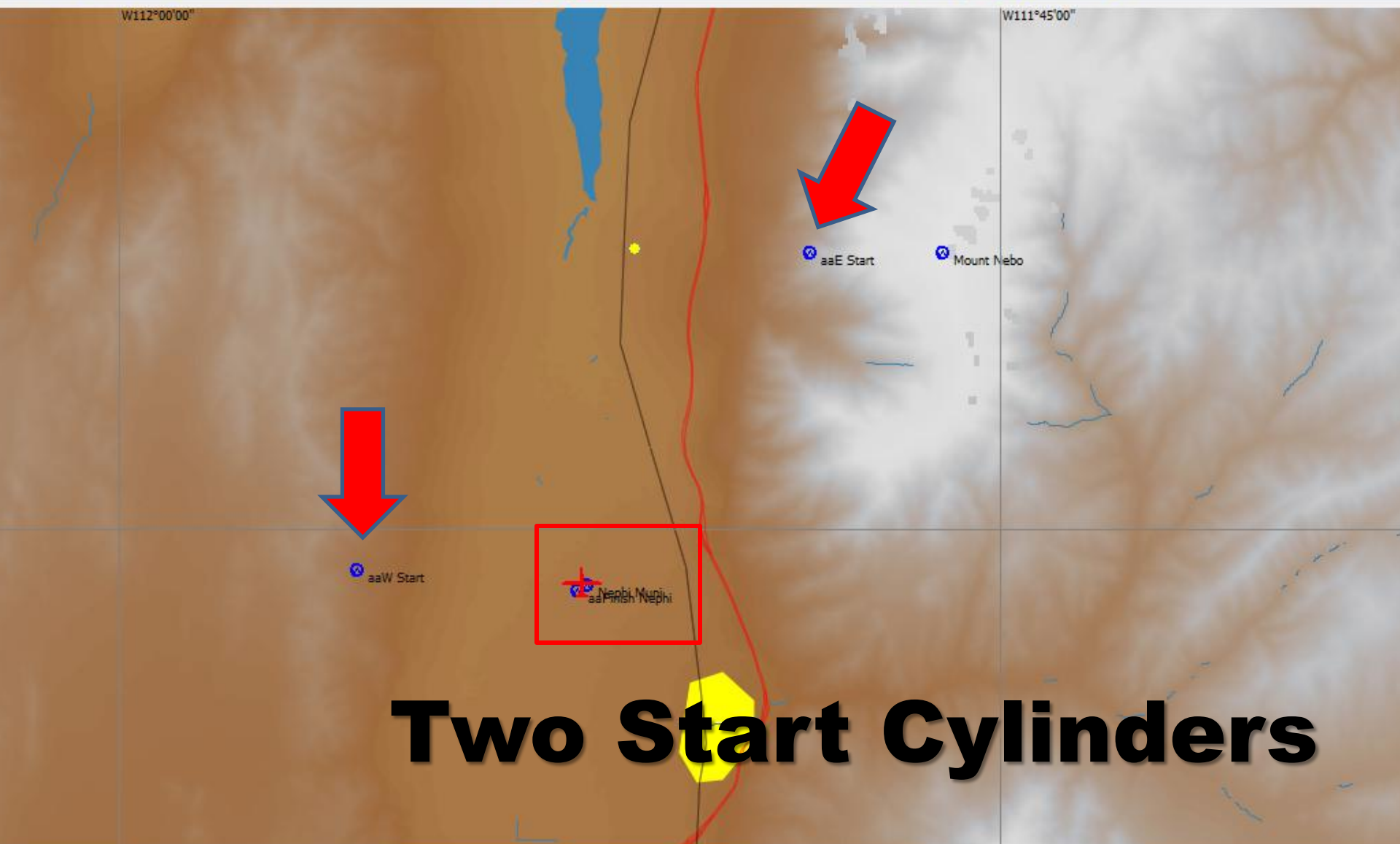
3:30 Minimum Time

Minimum	165 sm	← 265 km
Nominal	305 sm	← 490 km
Maximum	447 sm	← 719 km

Nephi	1228.
Nephi AWOS	118.275
Glider XC Camp	123.3
Glider to Glider	123.5 and 121.95

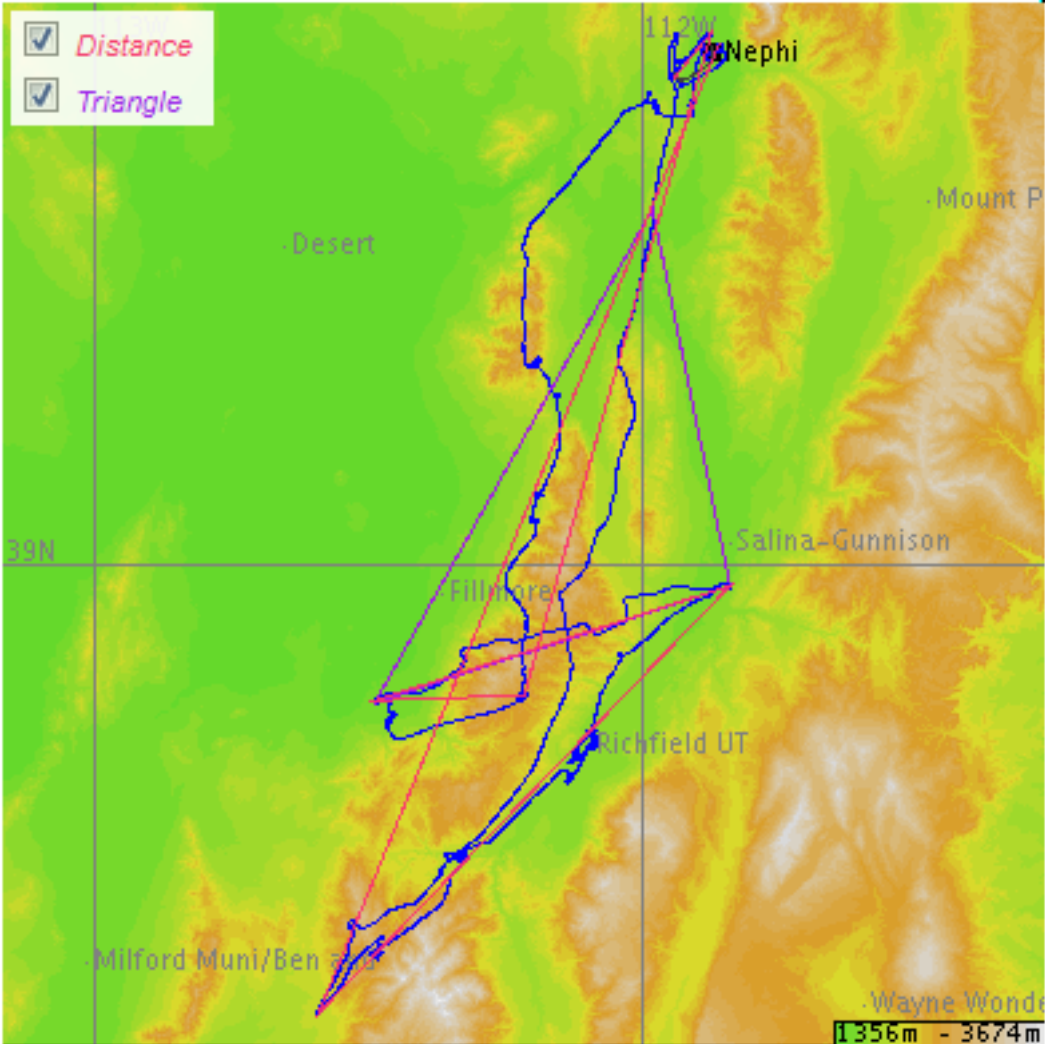
NOTES:

Retrieve Office: 435-671-6441



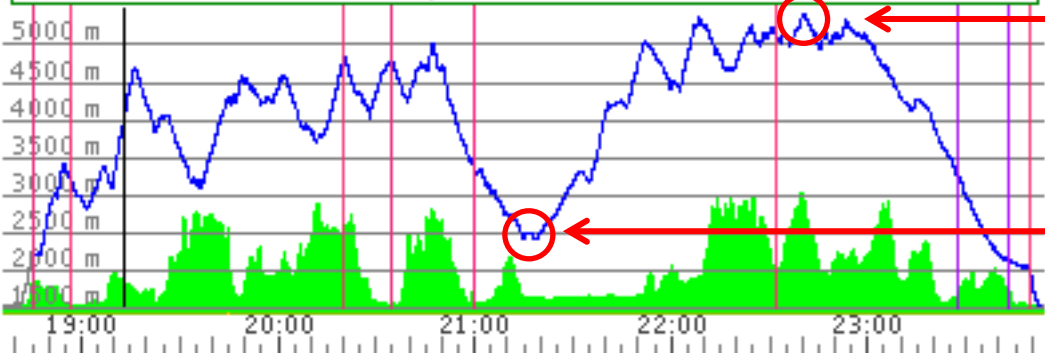
Two Start Cylinders

Time	Alt.	Vario	Gsp.	dt	dH	AVario	AGsp	Dis.Done	L/D	Dis.Task	Vt	Vavg.	L/D Finish	Wind	AGL	IAS
58:09	5013ft	---kts	---mph											---°/---mph	0ft	---mph



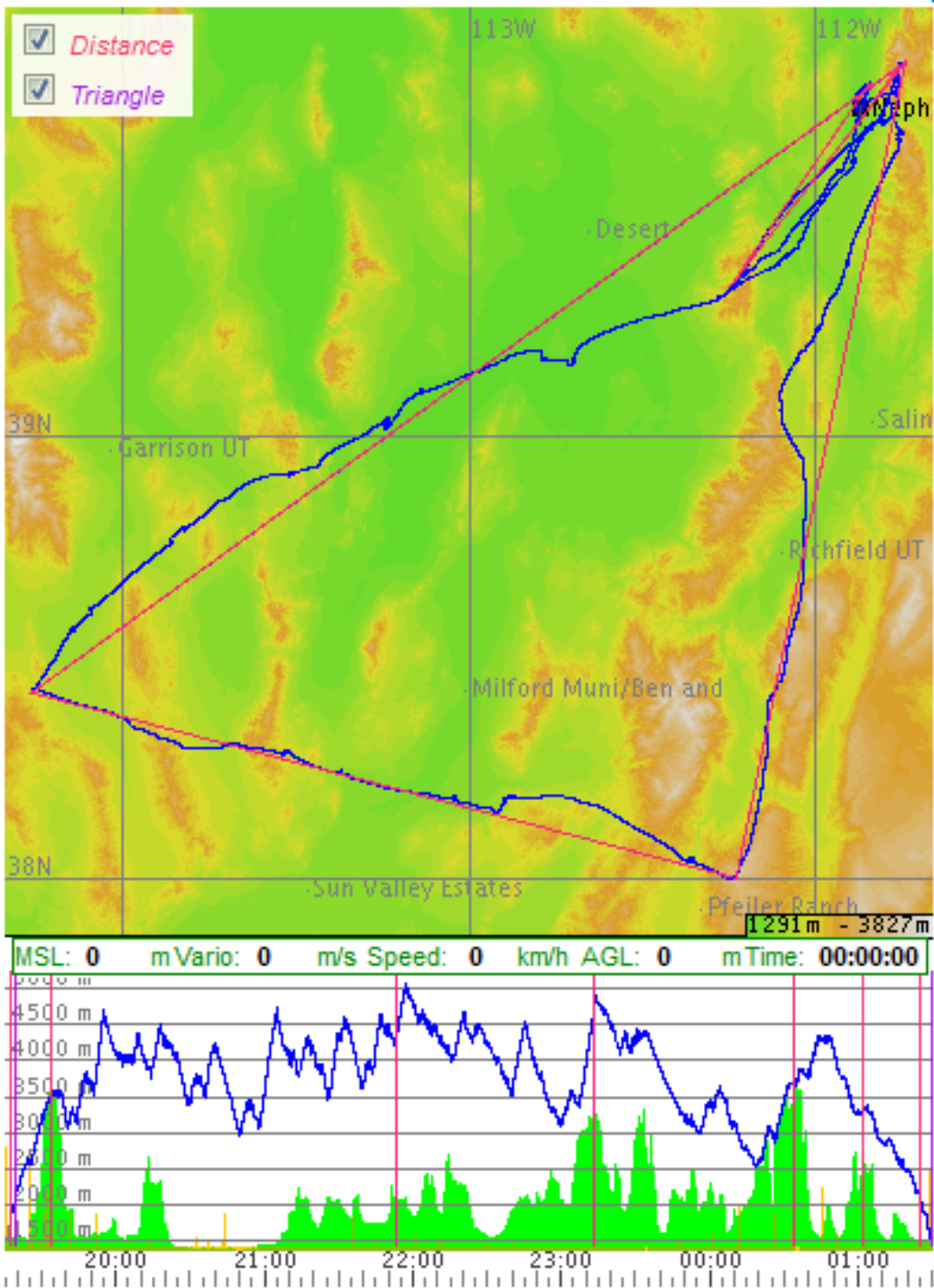
Palmer "F"
DG-303
Day 2 Task
2nd in Sports Class
365 km
92 km/h (57 MPH)

MSL: 4040 m Vario: +4.8 m/s Speed: 112 km/h AGL: 2197 m Time: 19:13:59



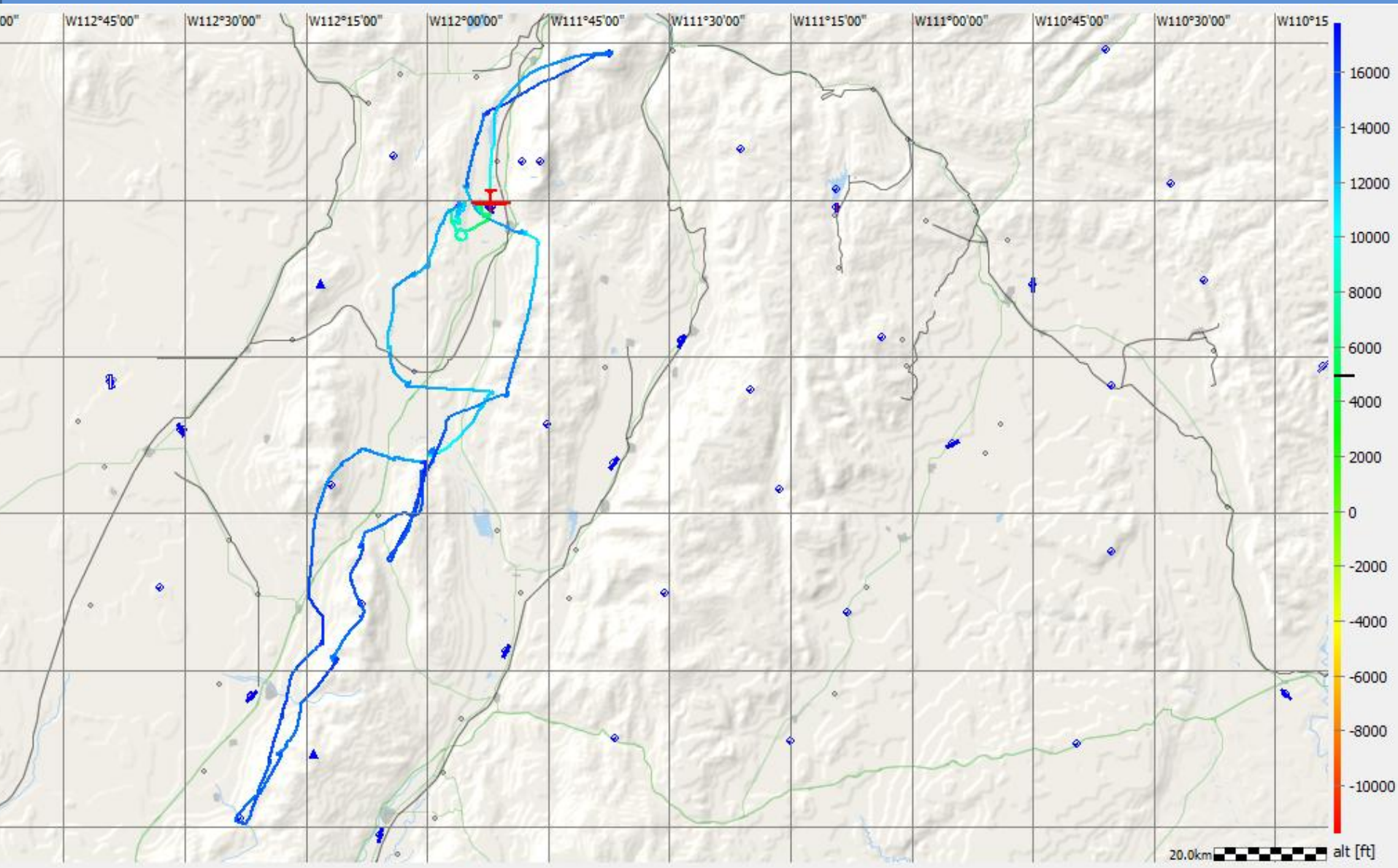
High Point 5404m (17,730 ft)

Low Point 2440m (8,005 ft)



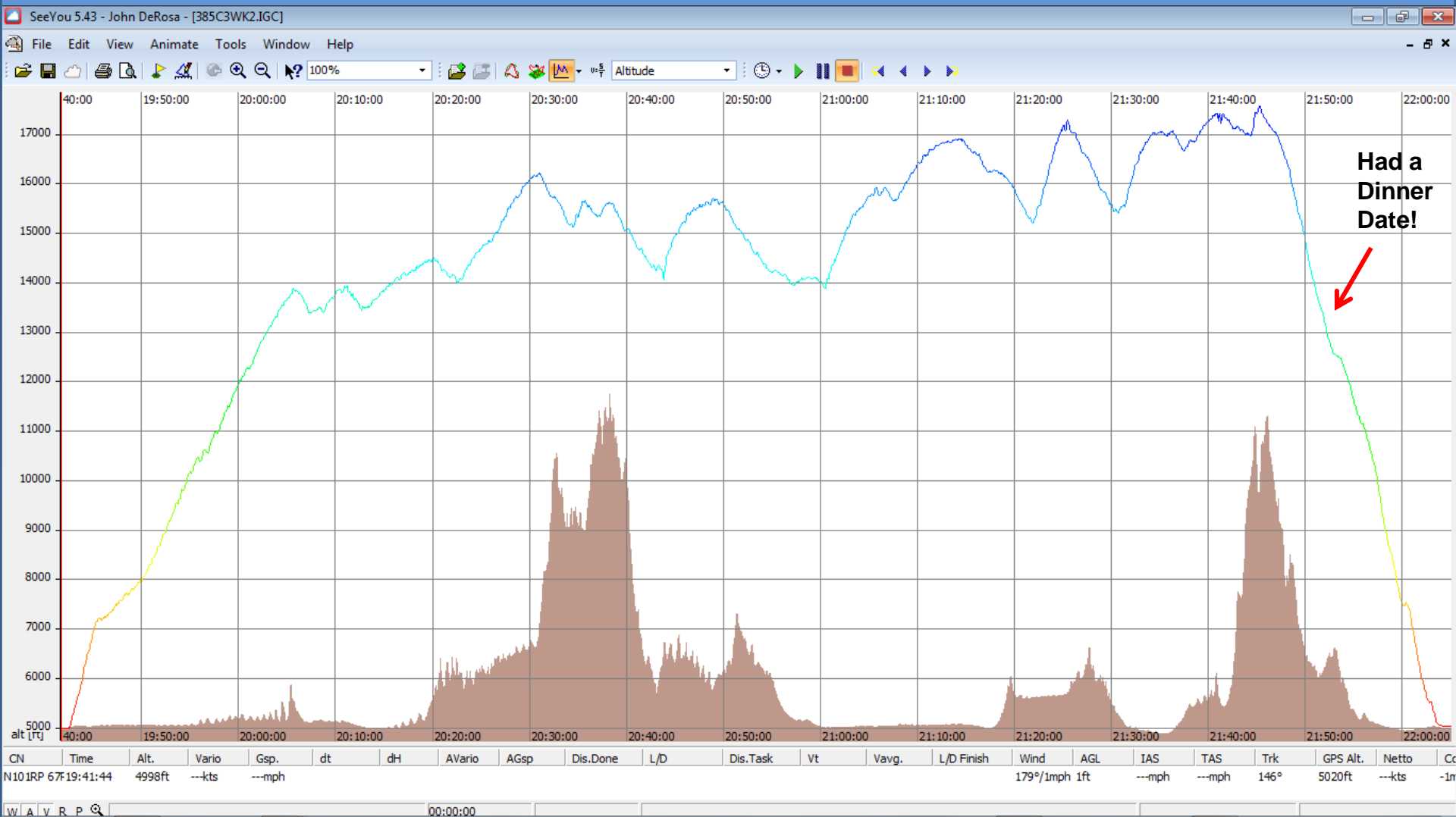
Vassel "B4"
ASW-27
809 km Triangle
132 km/h (82 MPH)

DeRosa "67" on the Last Day Gold Distance

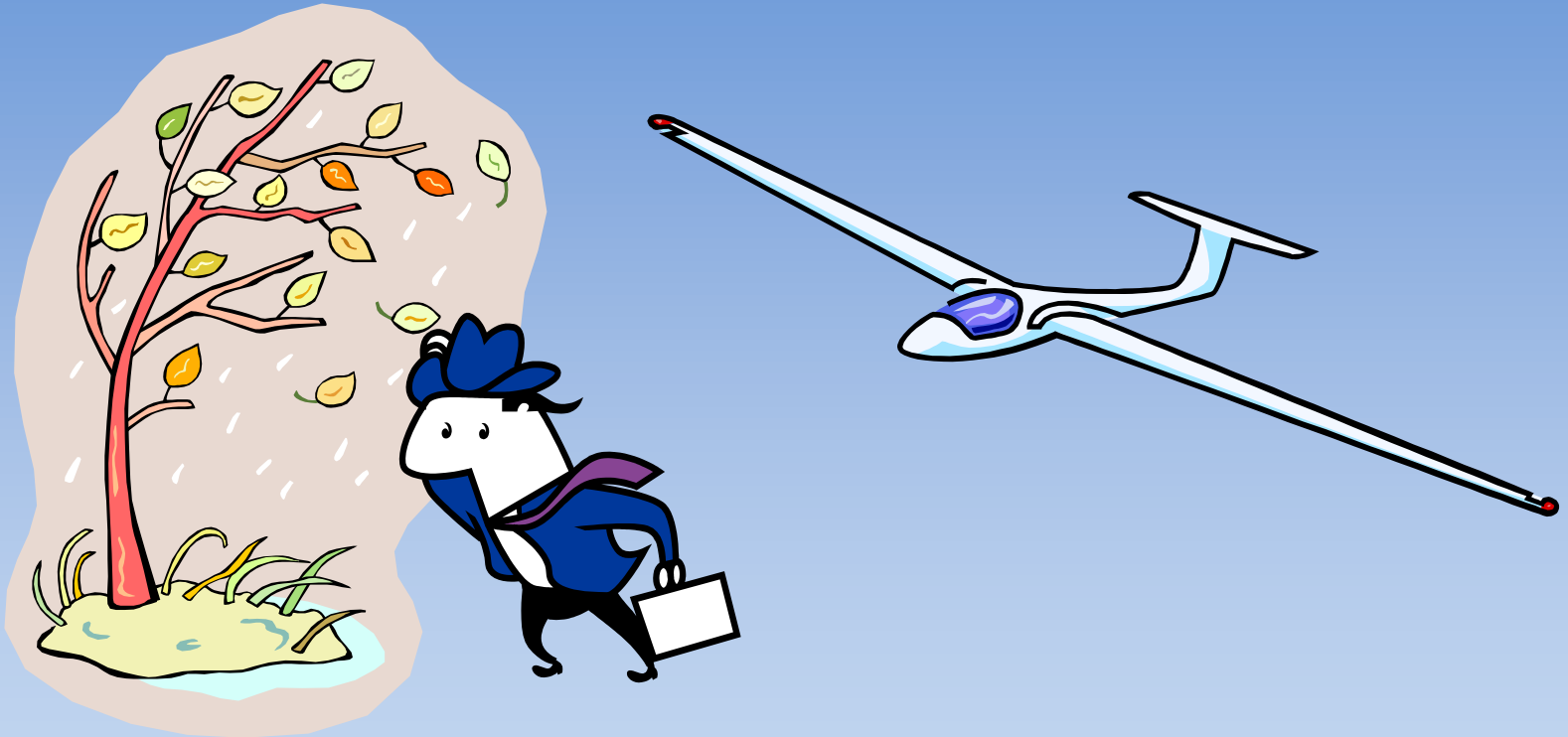


DeRosa "67" on the First Day

17,567 Ft MSL Gold Altitude Gain (3,000m)



Cross Winds



“We never have crosswinds!”

Mountain Range Gap East of Airport



Mount Nebo

**Winds from
East**

Nephi Municipal Airport-U14





E-W "Runway"

Main Runway

Alternate Grass Runway

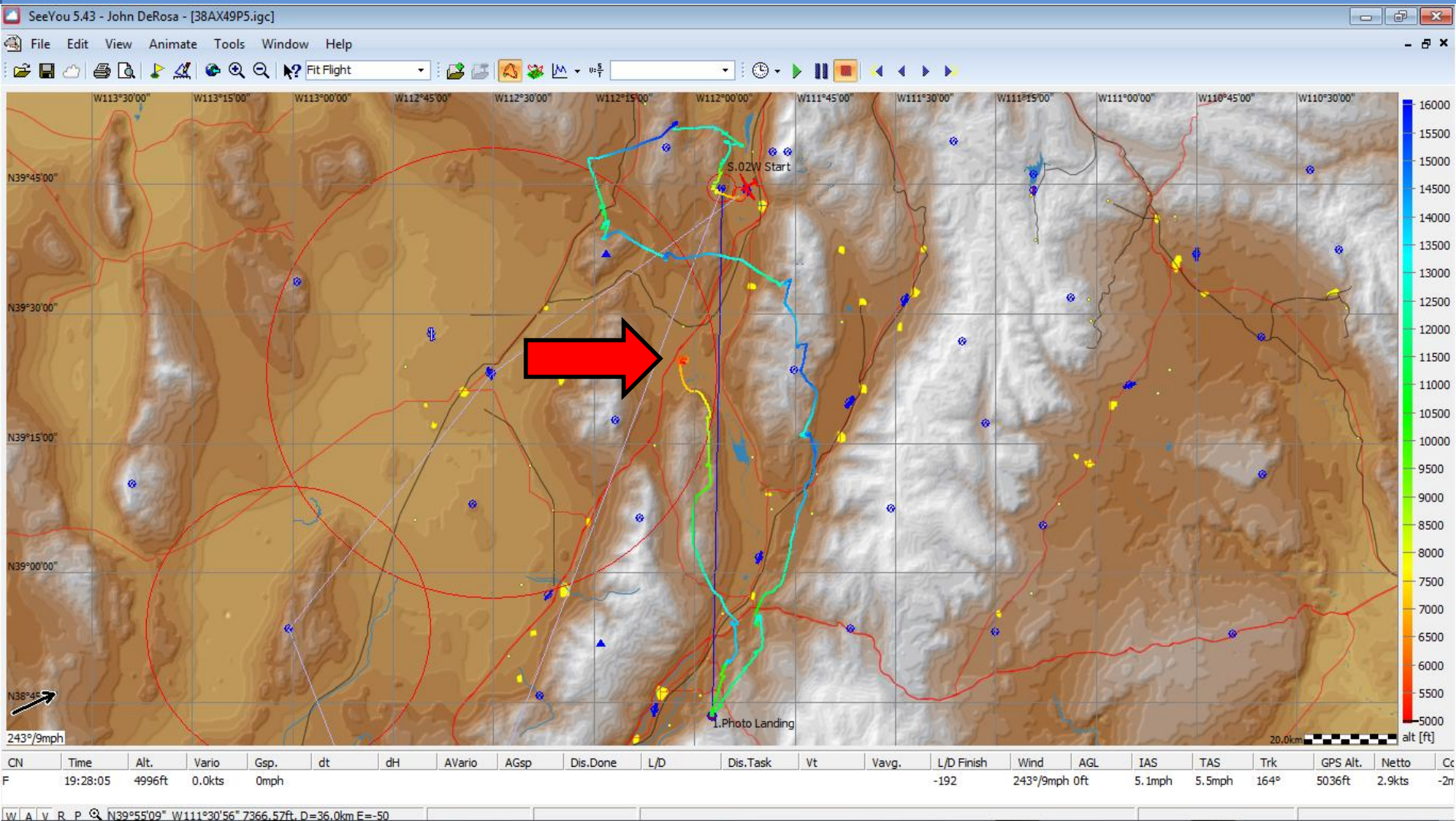


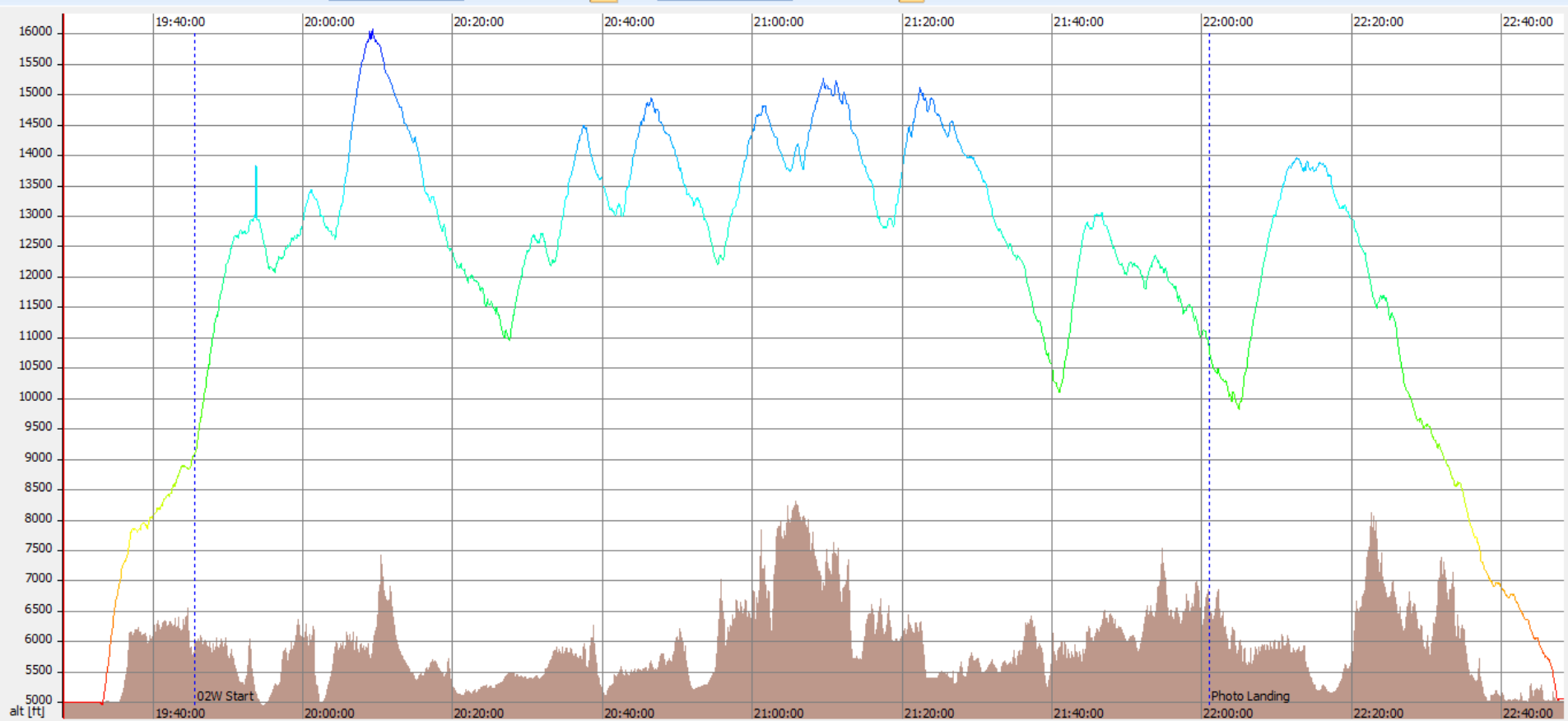


Landout!



Foxtrot's Landout







Nephi Municipal Airport-U14

22.5 miles

Yuba Reservoir

15

50

89



15

County Rd

Yuba State Park

~2,000 Feet

Image USDA Farm Service Agency

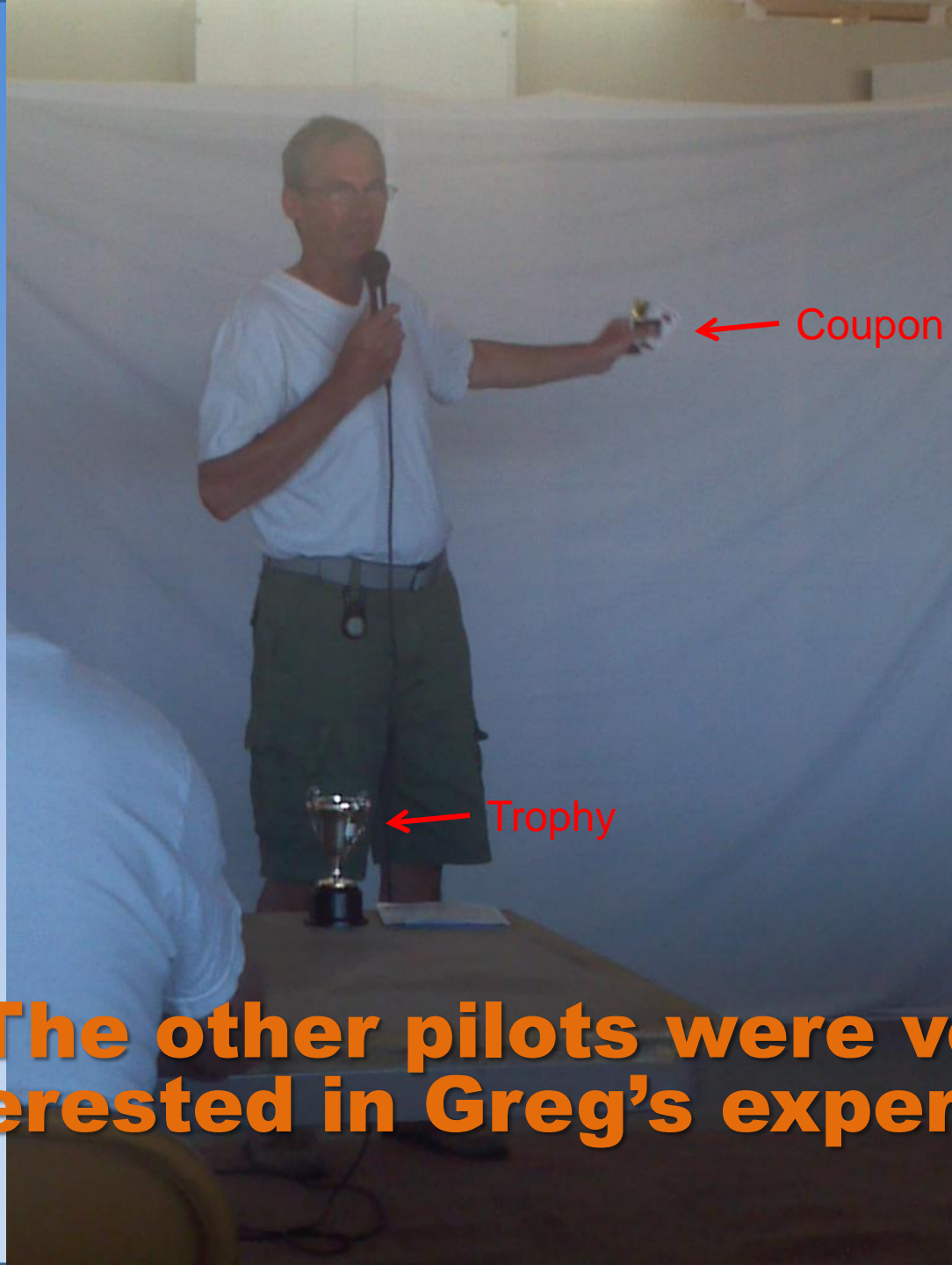








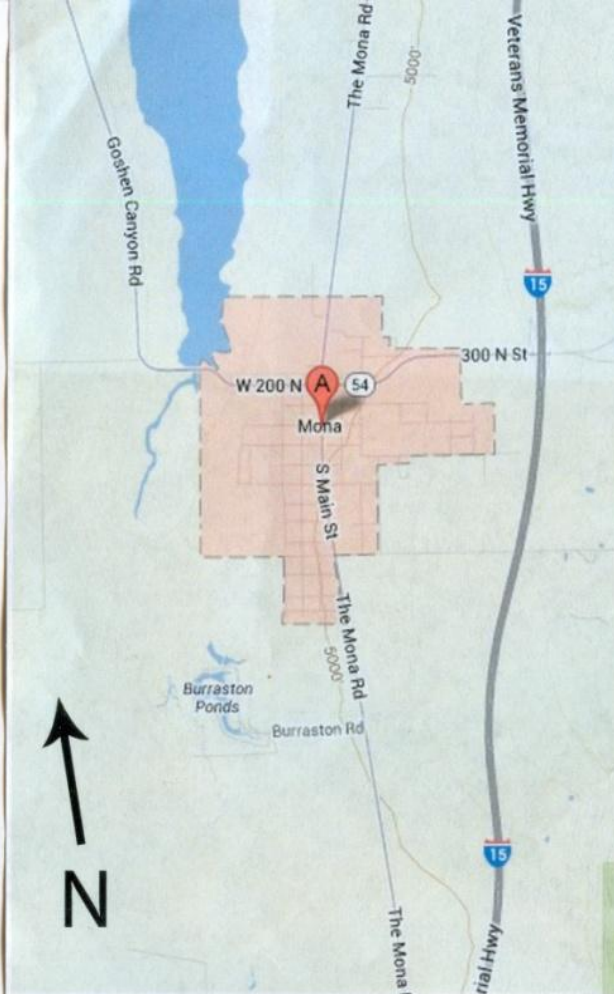




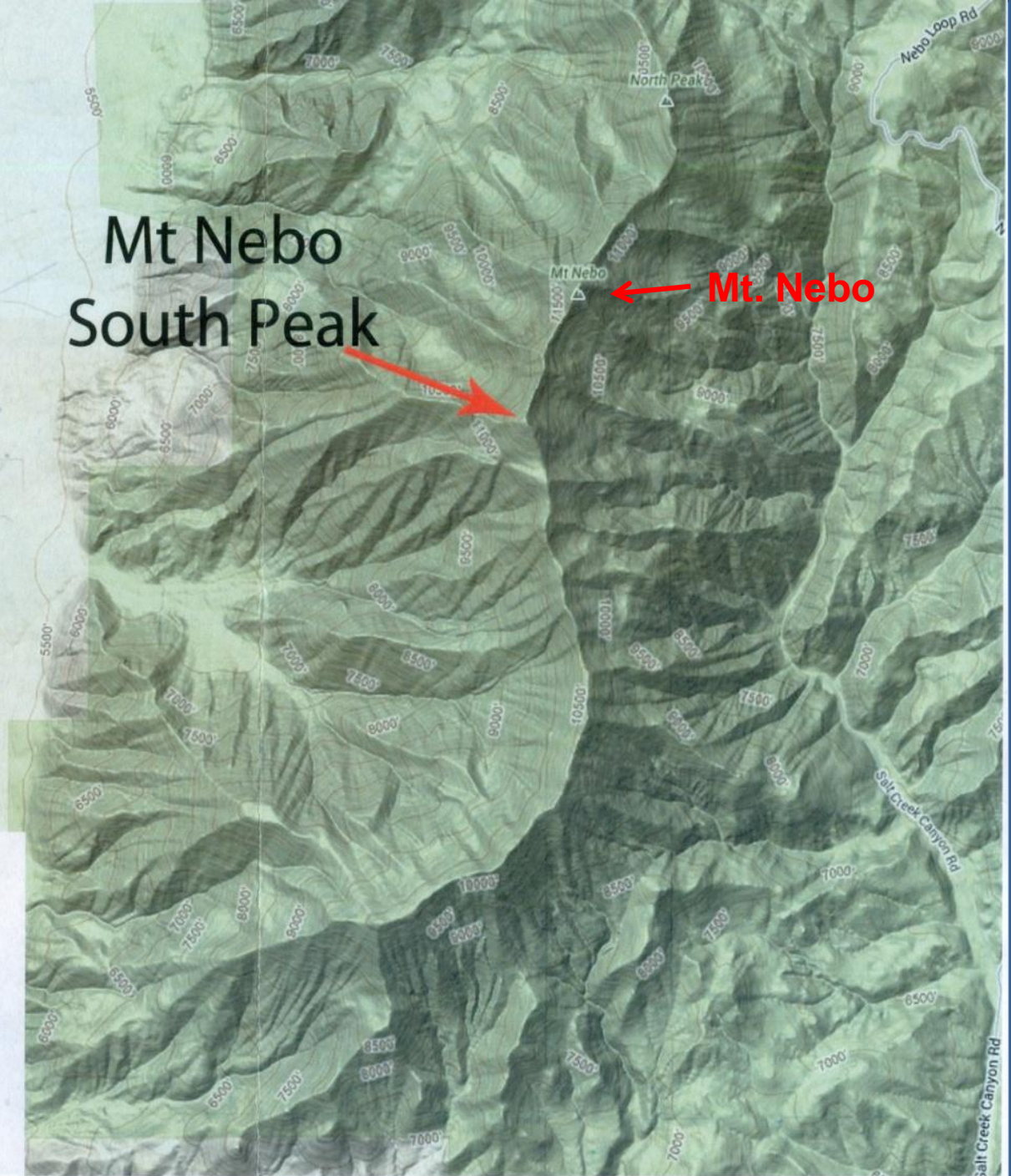
The other pilots were very interested in Greg's experience

Professional Photography



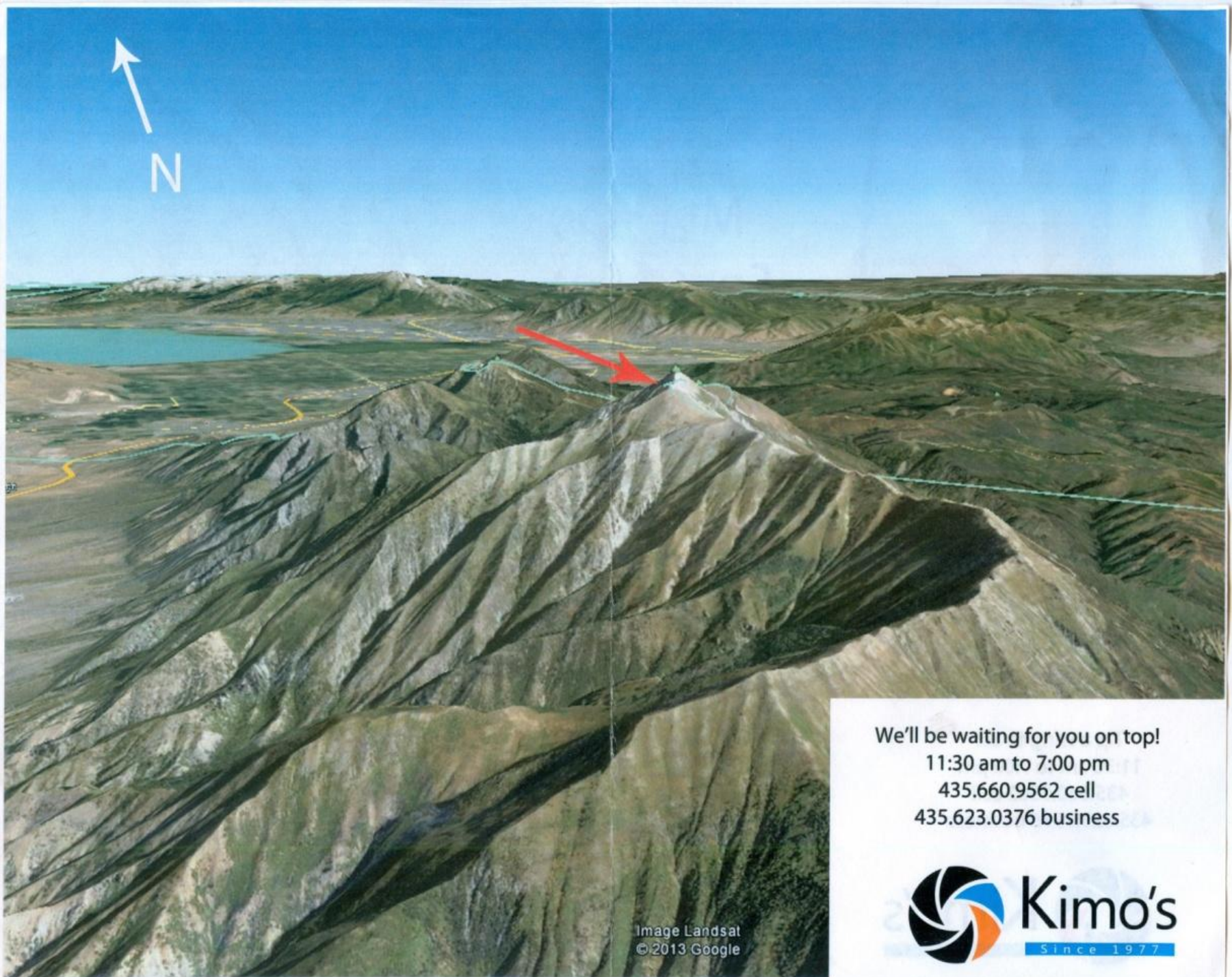


Mt Nebo South Peak



Tip a wing to us!
11:30 am to 7:00 pm
435.660.9562 cell
435.623.0376 business





We'll be waiting for you on top!

11:30 am to 7:00 pm

435.660.9562 cell

435.623.0376 business

Image Landsat
© 2013 Google

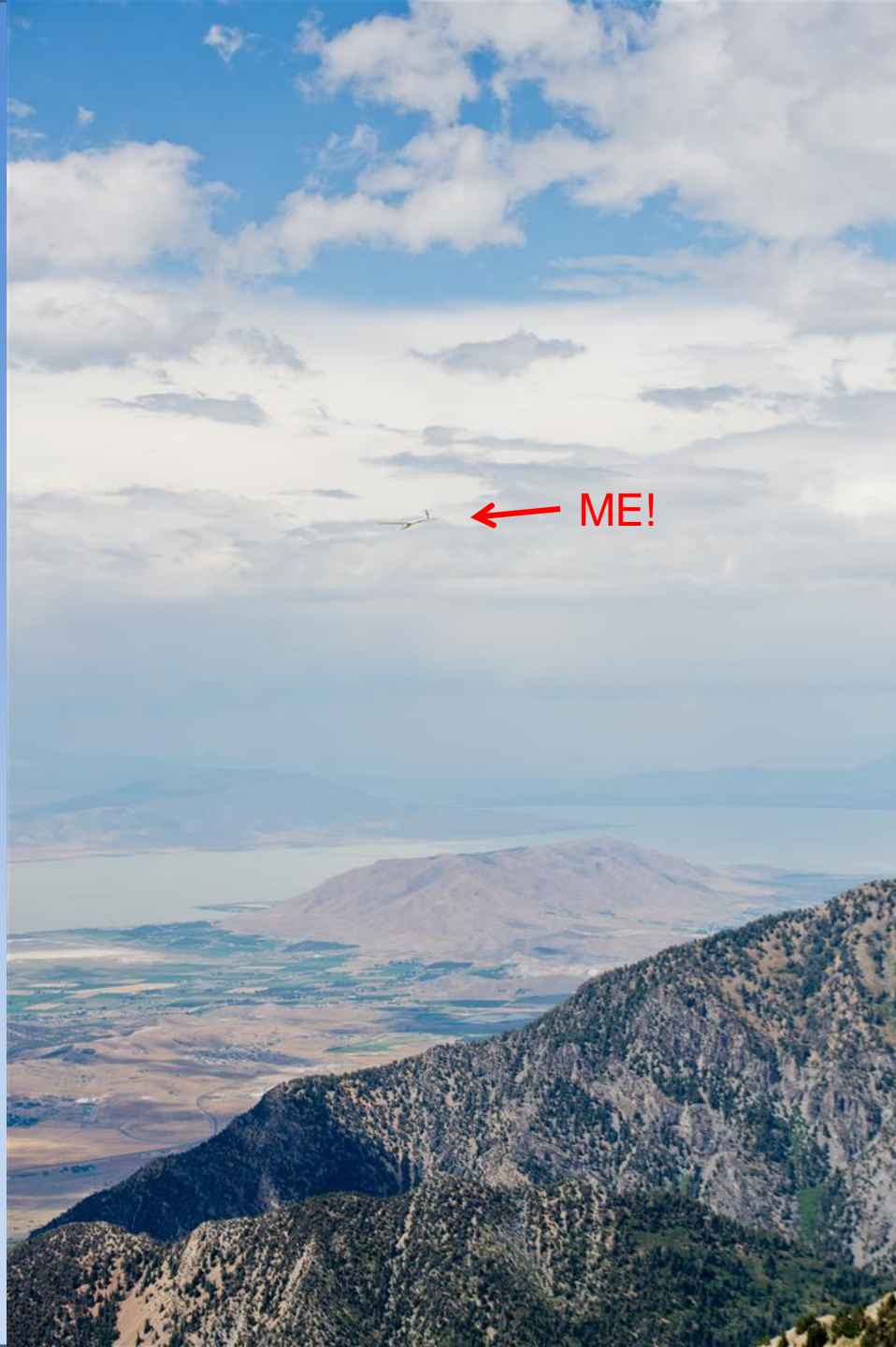


Kimo's
Since 1977



MT. NEBO, JUAB, UTAH - 11,877 FT (3,620 M)

PHOTOGRAPHY BY JIMMY CORAY





Kimo's

Since 1977





Kimo's



Kimo's

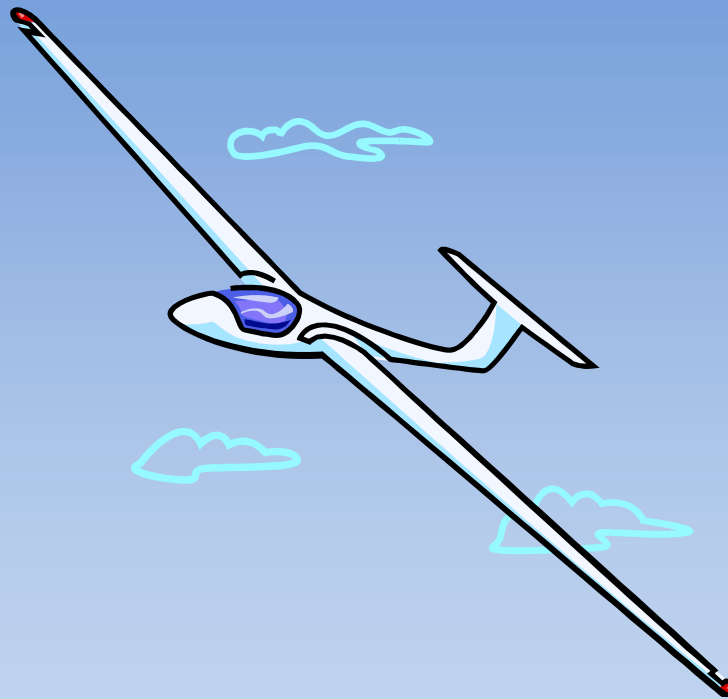
Since 1977



Kimo's

Since 1977

On Line Contest Results



OLC Results

- 2nd overall in the world during this week
- 46,000 km (28,000 miles) which is a little over one time around the world!
- Some highlights of the flights posted to OLC
 - 104 flights
 - 445 km average
 - 809 km longest
 - 132 km/hour fastest

Averaged flight distance (over 500 km)

629 km Tim Taylor
607 km Bruno Vassel
579 km Joerg Stieber
569 km York Zentner
566 km Nicholas Kennedy
562 km Dan Wrobel
538 km Eric Greenwell
517 km Andy Blackburn
511 km Tom Bjork

Total distance flown during the camp (over 2000 km)

3939 km Dan Wrobel
3472 km Joerg Stieber
3145 km Tim Taylor
3034 km Bruno Vassel
2996 km Bob Farris
2828 km Nicholas Kennedy
2278 km York Zentner
2068 km Andy Blackburn
2043 km Tom Bjork

Long Individual Flights

809 km Bruno Vassel
804 km Tim Taylor
776 km Nicholas Kennedy
765 km Bruno Vassel
763 km Dan Wrobel
758 km Joerg Stieber
753 km Bruno Vassel
530 km Blake Seese
521 km Adam Kite
498 km Johann Posch

Records

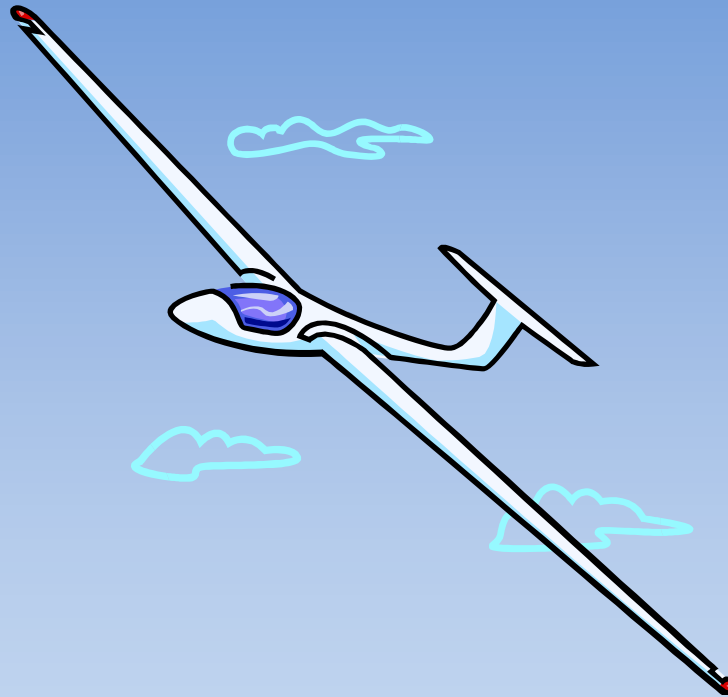
Bob Farris	100 km speed triangle
Bob Farris	200 km speed triangle
Bob Farris	Distance to goal
Dan Wrobel	500 km out and return

The Future at Nephi, Utah

- Airport Improvements
 - Cross wind grass runway
 - Watered grass tie downs
- Nephi 2014 Events
 - 2014 OLC Cross Country Camp
 - June 29 – July 5, 2014
 - <http://www.ssa.org/Contests?cid=2267>
 - 2014 Region 9 North Contest
 - August 2 – 9, 2014
 - Classes: Sports, Standard, 15m, 18m, 20m*
 - <http://www.ssa.org/Contests?cid=2268>

* 20m FAI handicapped class – by SSA waiver - first time in the US

In Conclusion ...





Great Mountains...



Great Sunsets...



Great Sunsets...



A Little Dusty...





A Little Messy...

...But Great Fun and Will Do Again!



Questions?



Kimo's

Since 1977